

1 inch equals 3,000 feet

0 1,500 3,000 6,000
Feet

Source Info:
GIS data from Metro - Portland, Oregon, 2005.

Legend:

Project Area
 Block Groups

Tracts
 227.04
 320.02
 321.06

204.01
 308.04
 321.03

227.02
 319.06
 321.04

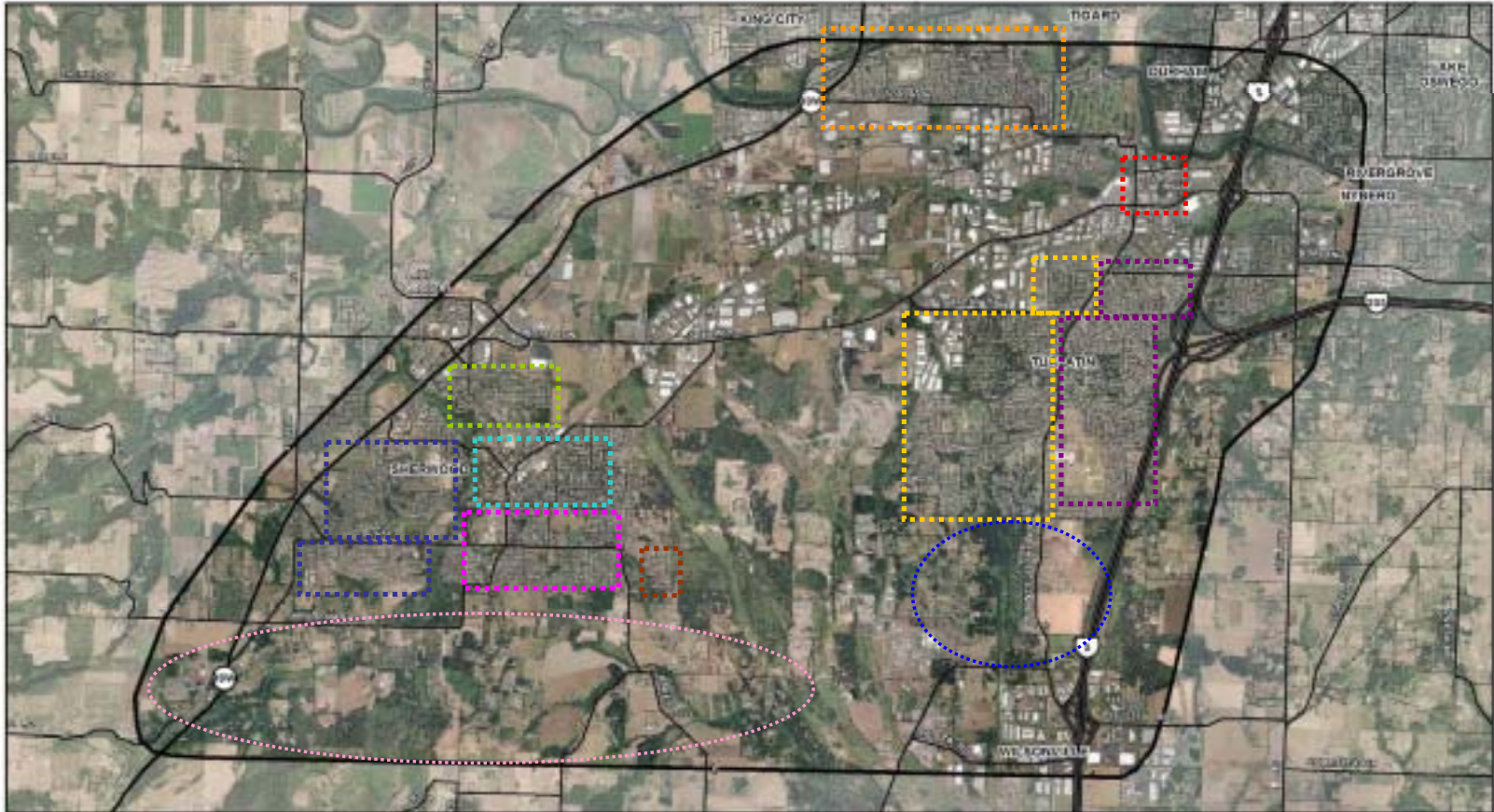
227.03
 320.01
 321.05



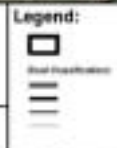
FIGURE 2-5

Census Tracts and Block Groups

April 2006



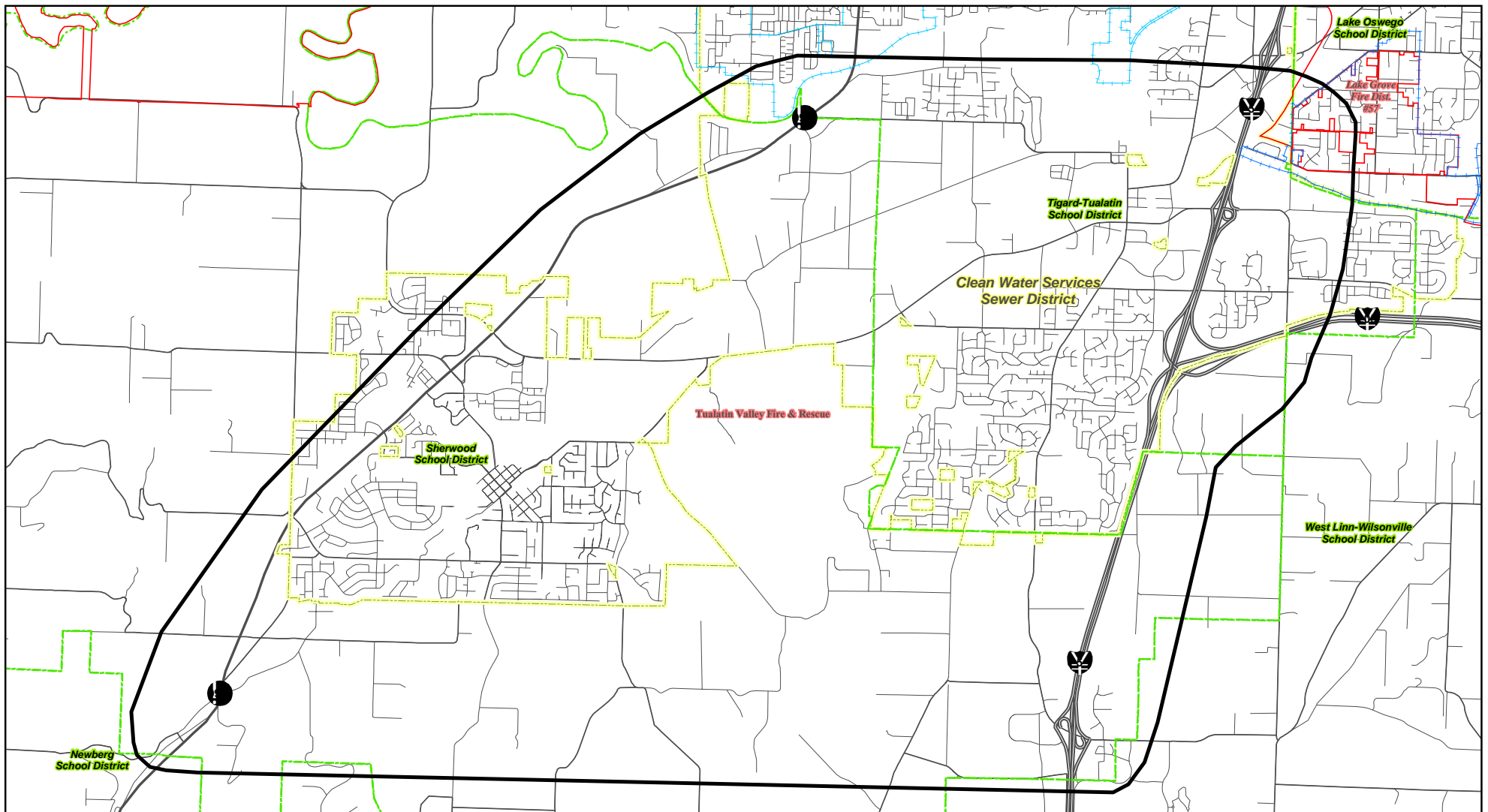
Source info:
GIS data from Metro - Portland, Oregon, 2005.



Note: The generalized boundaries shown in this figure indicate distinct, cohesive neighborhood units identified through field visits and the review of plans and policies applying to the study area. The different colored outlines correspond to text in the Community Cohesion section of this report. These are not official boundaries or formally recognized units.



FIGURE 2-6
General Boundaries of Neighborhoods
April 2006



1 inch equals 3,000 feet

0 1,500 3,000 6,000

Feet

Source Info:
GIS data from Metro - Portland, Oregon, 2005.

Legend:

Project Area	Water Districts	Fire Districts
	Rivergrove Water Dist. #14	School Districts
	Tigard Water Dist.	Sewer Districts



FIGURE 2-7

School Districts and Service Districts

April 2006